

This manual is for reference and historical purposes, all rights reserved.

**This page is copyright© by M. Butkus, NJ.**

This page may not be sold or distributed without the expressed permission of the producer

I have no connection with any camera company

On-line camera manual library

This is the full text and images from the manual. This may take 3 full minutes for the PDF file to download.

**If you find this manual useful, how about a donation of \$3 to: M. Butkus, 29 Lake Ave., High Bridge, NJ 08829-1701 and send your e-mail address so I can thank you. Most other places would charge you \$7.50 for a electronic copy or \$18.00 for a hard to read Xerox copy.**

**This will allow me to continue to buy new manuals and pay their shipping costs.**

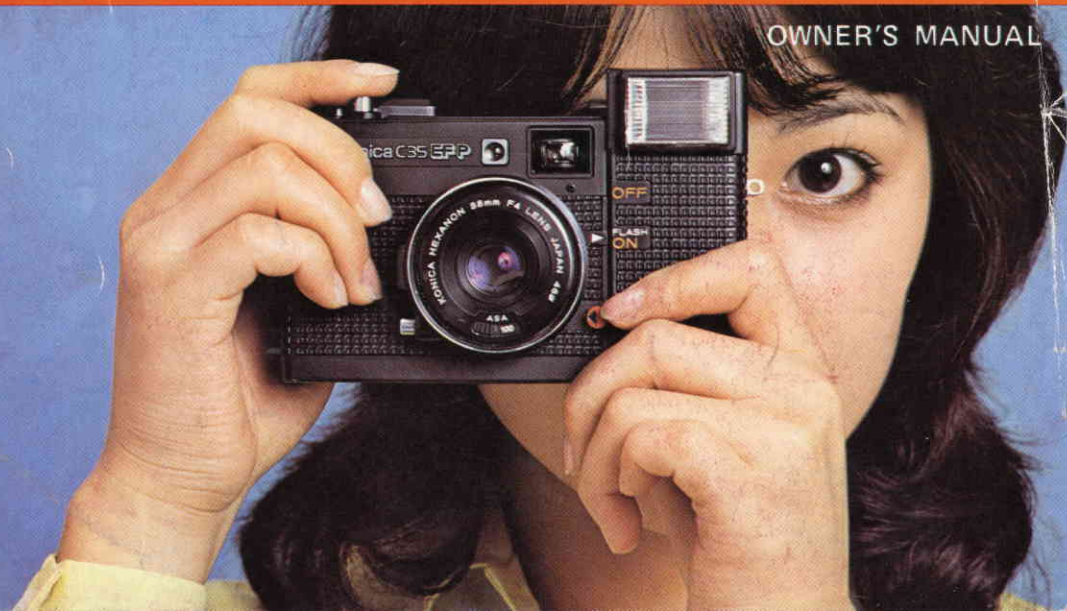
**It'll make you feel better, won't it?**

**If you use Pay Pal or wish to use your credit card,  
click on the secure site on my main page.**

[www.orphancameras.com](http://www.orphancameras.com)

# Konica C35 EFP

OWNER'S MANUAL

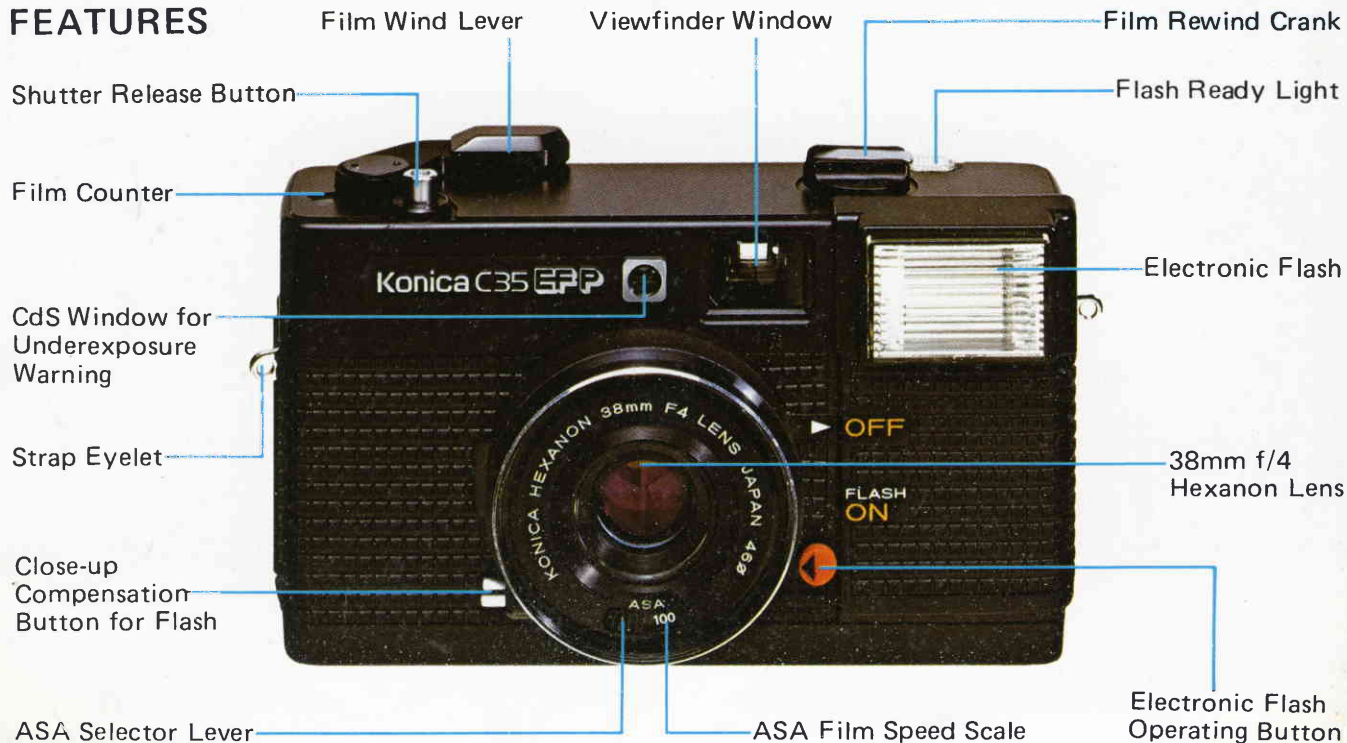


Congratulations on your purchase of a Konica C35-EFP. These instructions and pictures will help you capture those precious

memories of your family, friends, places and special occasions. The many fine features of your Konica C35-EFP help you create

better pictures. You can take better advantage of these features by taking a few moments to read these instructions.

## FEATURES



Viewfinder Eyepiece

Film Chamber

Film Sprocket Wheel

Back Cover

Back Cover Latch

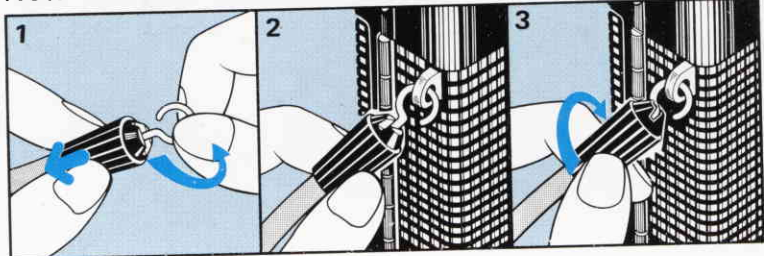
Film Take-Up Spool

Film Rewind Button

Tripod Socket

AA Flash Battery Chamber

### How to Use Wrist Strap



## FOR SAFETY'S SAKE

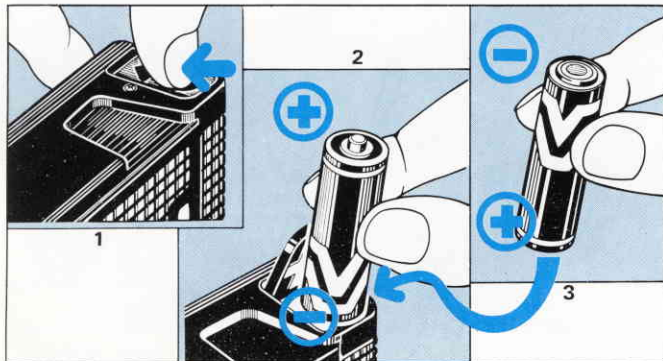
Your new Konica C35-EFP camera reflects the latest advancements in photographic engineering. Its operation is probably somewhat different from cameras and accessories which you have previously owned. For this reason, it is strongly recommend-

ed that you read these instructions carefully, shoot a "test" roll of film, have this roll processed and evaluate the pictures before exposing additional rolls. The processed "test" roll will verify that you are using your new equipment correctly, and allow you to make any necessary changes in operating patterns; additionally, it

will confirm that all camera functions are operating perfectly. In the event you are leaving on a trip (or for some equally important event) shortly, your Konica dealer can recommend the fastest way of having your first roll processed ... so you can be certain that all subsequent rolls will be as good — or better!

## 1. INSERTING BATTERIES

*for the built-in electronic flash and underexposure warning lamp*



1. Open the battery chamber on the bottom of the camera by pushing it in the direction of the arrow and lifting the cover gently. The cover is permanently attached to the camera.

2. Insert the 2 AA Alkaline batteries with the plus + and minus - as shown on the label inside the chamber.

3. Close the chamber cover, pop up the flash and fire the camera to test that the flash is working correctly. (see flash section for operation inst.)

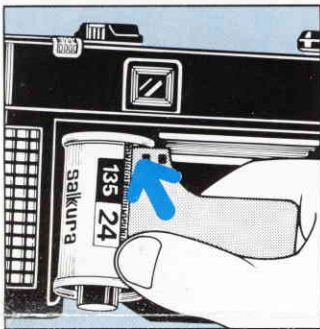
**Note:** Never use nickel cadmium batteries of the recharging type.



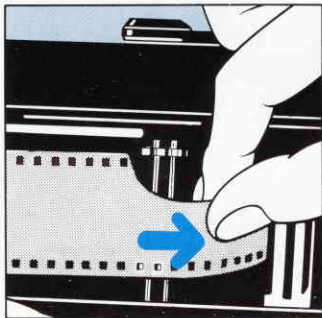
## 2. LOADING THE CAMERA WITH FILM www.OriginalCamera.com *Camera in Subdued Light Only*



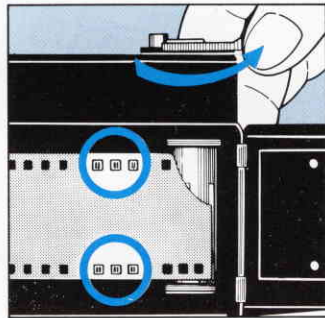
1. Open the camera back cover by pushing down on the back cover latch.



The Konica C35-EFP takes ASA 100 or 400 roll film in a 35mm cassette.

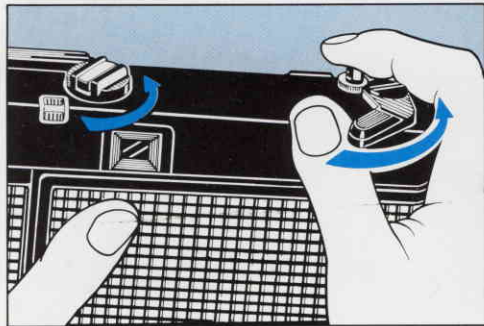


3. Feed the end of the film into any one of the slots in the film take-up spool.



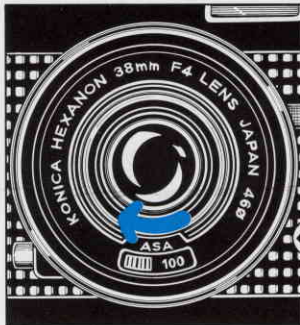
4. With the back cover still open, depress the shutter release button and advance the film wind lever until the narrow "leader" section of the film is wound completely

2. Remove the film from its packaging, and place the film cassette into the film chamber in the back of the camera.



5. Close the back cover, making sure that it has snapped shut. Advance the film wind lever and operate the shutter release until the film counter window shows 1. The film is now in position for the first picture. You will see the film rewind crank turning as you advance the film wind lever. This assures you that the film is unwinding from its cassette and advancing through the camera properly.

6. Check the film box or the instructions packed with the film to determine the film sensitivity or ASA rating. Turn the ASA selector lever so that the ASA film speed, 100 or 400, of the film loaded in the camera appears in the window. Note: Be sure the lever is set to a notched position.



past the film sprocket wheel. Be sure that the film sprockets (holes) fit directly into the top and bottom of the sprocket wheel.



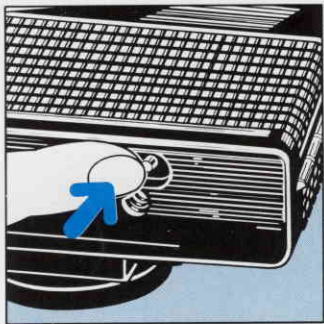
7. Now your camera is loaded and ready for picture-taking. Each time you advance the film after taking a picture, the film counter will automatically advance keeping track of the number of pictures you have taken. The film counter will automatically reset to "0" whenever you open the back cover to reload your next roll of film.

### 3. UNLOADING THE CAMERA www.orphancameras.com *Unload Camera in Subdued Light Only*

When you reach the end of your 20, 24 or 36-exposure roll of film, the film wind lever will not be able to be advanced any further

without excess force. Never force the advance lever, this could tear the film. At this time it is necessary to rewind the film back into

its cassette before opening the back cover and removing it for processing.



1. First, press the film rewind button on the bottom of the camera.



2. Then, flip open the film rewind crank and turn it in the direction of the arrow, printed on its handle (clockwise), until it turns freely. You will actually feel a change in the lever tension when the film is completely rewound into its cassette.

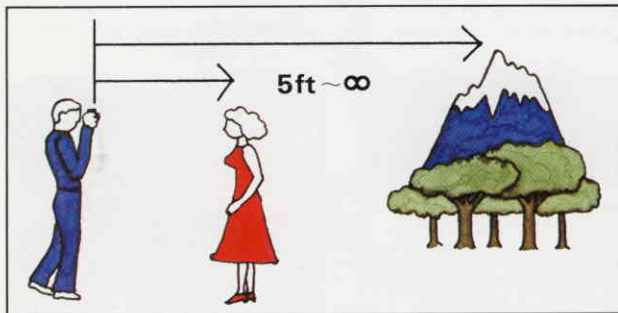


3. When the crank turns freely the film has been rewound into the cassette. Open the camera's back cover to remove the film, and have it processed. If you open the back cover before completely rewinding the film, you will ruin the pictures you have just taken on the film that has not been rewound into the cassette.



## 4. LOOKING THROUGH VIEWFINDER

In outdoor photography during the daytime, the Konica C35-EFP takes sharp pictures of all subjects from 5 feet (1.5 meter) to infinity.



The bright frame visible in the viewfinder is the actual area of your pictures. When taking close-up pictures between 5–8 feet (1.5–2.4 meter), use the smaller bright frame marked "Parallax Compensation Marks".

Parallax Compensation Mark

Bright Frame

Parallax Compensation Mark

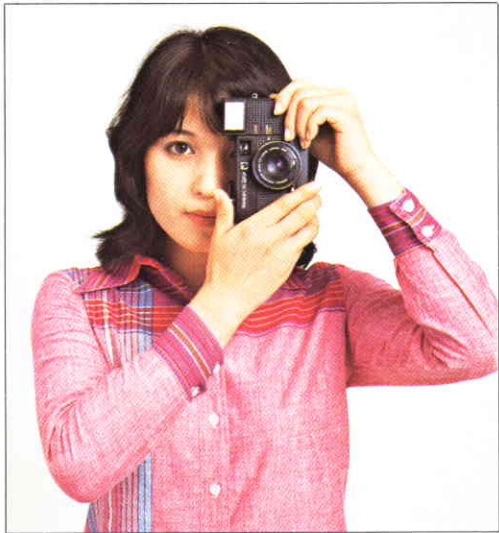
Underexposure Warning Light



When you depress the shutter release button slowly, and a red light appears in the viewfinder, it signals that there is not enough light for a good exposure. You should now use the Konica C35-EFP's built-in "pop-up" electronic flash to continue your picture taking.

[www.orphancameras.com](http://www.orphancameras.com)





## 5. HOLD YOUR CAMERA STEADY

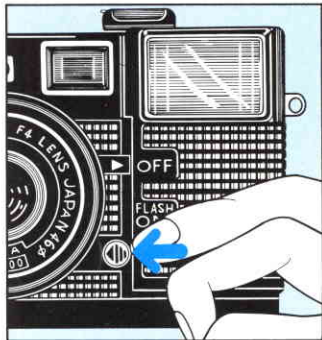
To get the best pictures possible, learn to hold your Konica C35-EFP properly. Grip the camera firmly with both hands and while viewing through the eyepiece, hold it gently against your fore-

head. Try to keep your arms close against your body; this will also help you remain steady. Finally, keep your index finger poised on top of the shutter release and when you are ready to

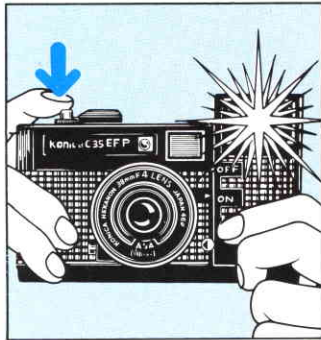
take the picture, DON'T punch, but rather squeeze the shutter release. Using your Konica camera this way will help you get the very best results.

## 6. FLASH PHOTOGRAPHY [www.orphancameras.com](http://www.orphancameras.com)

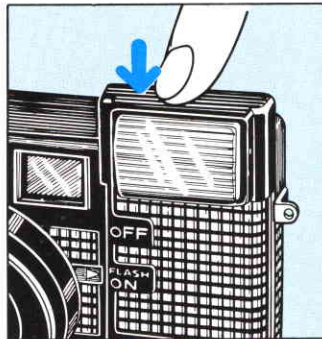
When the red, underexposure warning light inside the viewfinder lights up — it's time to use the Konica C35-EFP's built-in "pop-up" electronic flash.



1. Push the flash operating button in the direction of the arrow (toward the lens). The flash will "pop-up" into place and automatically turn itself on.

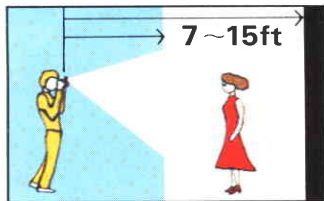


2. When the "flash ready" light at the top of the camera goes on, you're ready to take a flash picture.



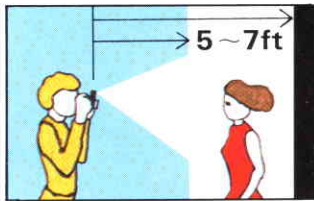
3. After flash photography, push the electronic flash unit down until it stops — turning off the power.

## FLASH DISTANCES



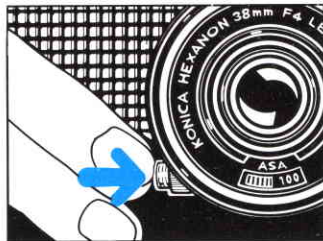
### Camera-to-Subject Distance— 7–15 ft

In flash photography, make sure that you take pictures within a camera-to-subject distance of 7–15 feet (2–5 meter), regardless whether ASA 100 or 400 film is loaded in your Konica C35-EFP.



### Camera-to-Subject Distance—5–7 feet

When you want to take flash pictures of subjects between 5 and 7 feet (1.5–2 meter) merely depress and hold the close-up flash compensation button located at the side of the lens, while taking the pictures.







### Electronic Flash for More Effective Daylight Photography

Even in a bright situation where the underexposure warning light is not put on, use the electronic flash unit for more effective photography.

### NOTE

The light of an electronic flash unit is reflected by your subject back through the lens to the film. Naturally, highly-reflective surfaces (mirrors, for example) will reflect more of the light. Interestingly, the human eye is an excellent reflector in its own right ... so much so, that under certain conditions, color pictures of people

may exhibit a pinkish-tinged reflection appearing in the eyes. (This phenomena occurs even when a separate flash unit is used.)

"Pink-eye" occurs most often in pictures of young people, animals, and most often when the pictures are taken in a dimly-lit area (this causes the subject's pupils to open wider than usual).

**1. Ask your subject not to look**

**directly towards the camera while taking the picture.** Usually, this results in a more natural and pleasing expression as well.

**2. Ask your subjects to look at a bright light just before taking the picture ...** for example, at an overhead or a table lamp in the same room. This will cause their pupils to become smaller, and reduce the possibility of "Pink-eye" in most instances.

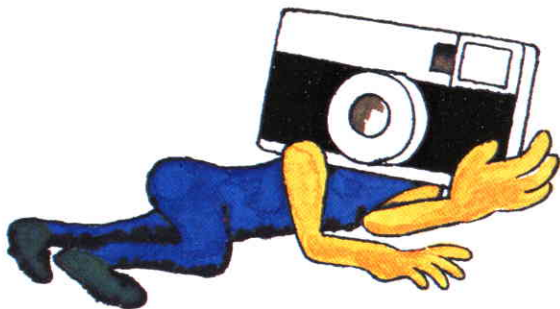
## IMPORTANT OPERATING NOTES



### Replacing the Batteries

With new batteries the flash ready signal will light in approximately 6–8 seconds. When the ready light takes 20–30 seconds to light, it's time to change the batteries.

Always replace with 2-AA "Alkaline Batteries" — Mallory MN1500 or Eveready E-91 or



### When the electronic flash has not been used for a long time

If you have not used the built-in electronic flash for several months, it's a good idea to "pop-up" and turn the flash on, then operate the camera/flash a few times to restore the flash to peak performance.

equivalent, to obtain the maximum number of flashes per set of batteries.

To save battery power, turn off the flash between photos by pushing the electronic flash down toward the camera body.



**Protect your Konica C35-EFP from water damage**

Your Konica C35-EFP contains a powerful electronic flash. Water can damage the electronic flash circuits and also effect the lens and transport mechanisms. Should your Konica C35-EFP be accidentally subjected to external water — immediately wipe off with a dry cloth.



**Protect your Konica C35-EFP from heat and moisture.**

At a seashore in summer or in a car under the direct sunlight, do not leave your camera at a hot and humid place for many hours. Otherwise, the performance of the film and battery cells and the mechanisms of your camera will be affected.



**If your Konica C35-EFP needs service**

Your Konica C35-EFP has been designed and constructed for years of trouble-free use. In the unlikely even that it needs service, take it to your photographic dealer or ship it, in a well packed carton to the closest service center.

## SPECIFICATIONS OF KONICA C35-EFP

**Camera Type:** Compact 35mm with Built-In Electronic Flash and Universal Focus

**Film:** Standard 35mm, ASA100 or 400

**Lens:** Konica Hexanon 38mm f/4, 3-groups, 4-element construction; Konica Color-Dynamic Coated; accepts 46mm filters.

**Min. Focus:** 1.5 m (5 feet)

**Aperture:** f/4, f/8 and f/16

**Shutter:** Konica Between-Lens, speed 1/125 second.

**Flash:** Built-In Konica Electronic, effective G.N. 45 w/ASA 100 film. Recycling time 6-8 seconds; approx. 250 flashes per set of AA Alkaline batteries.

**Dimensions:** 128 x 73 x 53 mm (5.0" x 2.9" x 2.1")

**Weight:** 300g (10.6 ozs) \*without battery

---

A C35-EFP instruction book is available in five languages (English, German, French, Swedish, Spanish). If you would like a copy of this book, please send \$1.50 to Konica Camera Co., P.O. Box 1102, Woodside, New York 11377 specifying C35-EFP five language instruction book.

---

# Konica Camera Co.

25-20 Brooklyn-Queens Expressway West, Woodside, N.Y. 11377  
1011 Chestnut Street, Burbank, California 91506

[www.orphancameras.com](http://www.orphancameras.com)

# Konica C35 EFP

OWNER'S MANUAL

